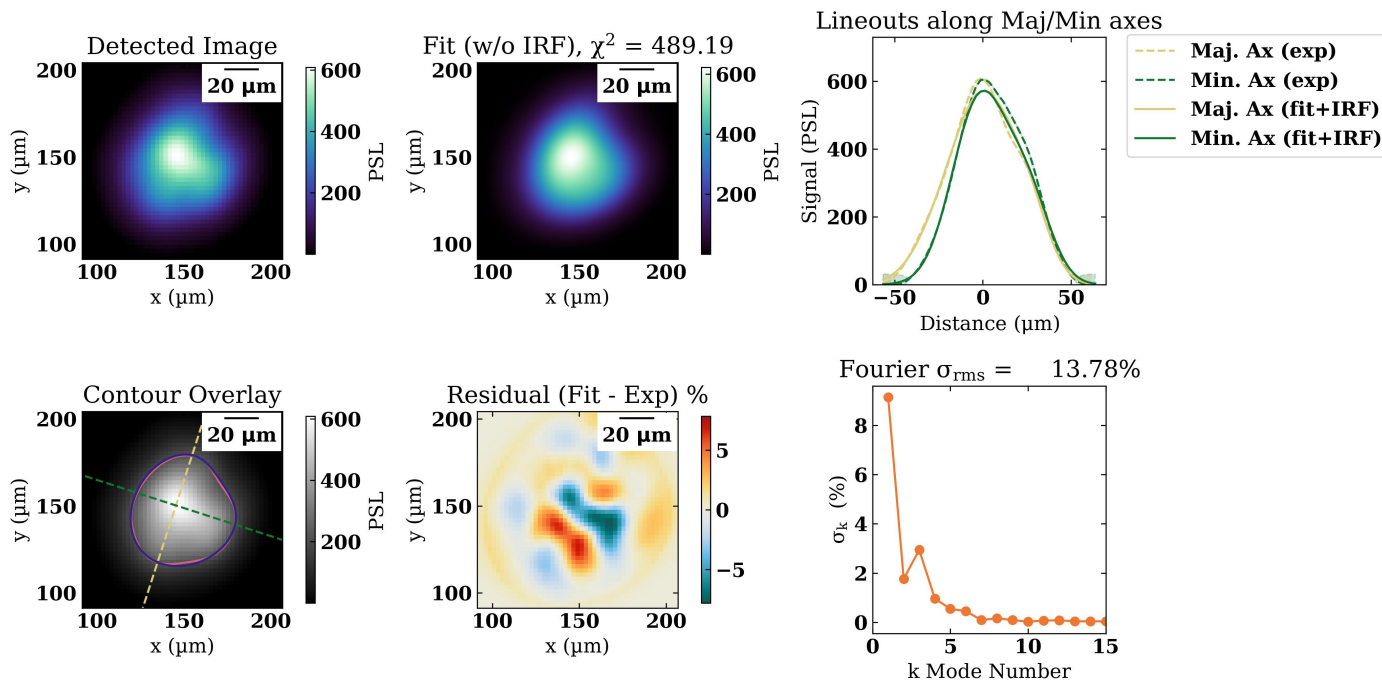


Results

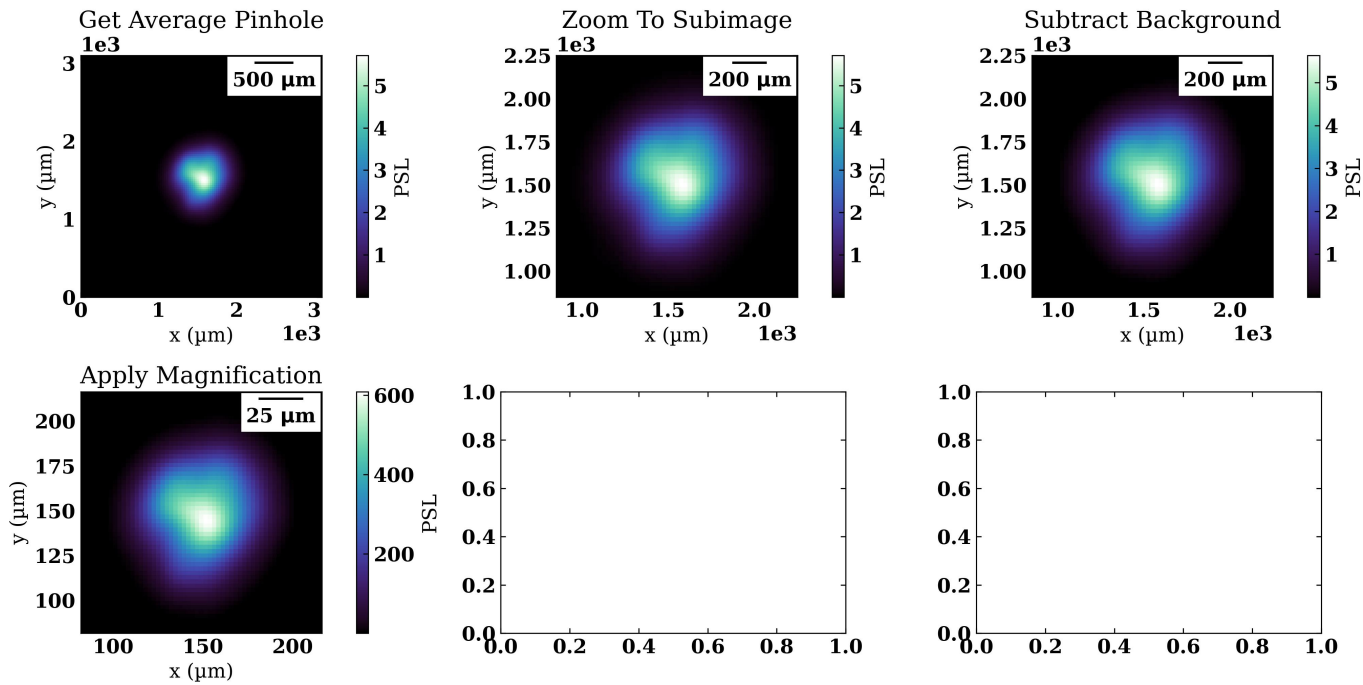
Parameter	Channel 1
Fit Metric	489
Amplitude	623 ± 0.157 PSL
Axial Ratio	1.16 ± 0.000881
Core Offset	5.67 ± 0.0516
L1 Angle	-0.865 ± 0.00809
L2 Angle	-1.88 ± 0.00166 rad
Major Axis	31 ± 0.00447 μm
Minor Axis	26.7 ± 0.0211 μm
Photon Yield	1.07e+04 ± 20.8 J
R0	29 ± 0.00374 μm
R17	36.5 ± 0.00329 μm
Supergaussian Exponent	2.18 ± 0.00444
X Center	145 μm
Y Center	150 ± 0.0686 μm

TRXI IP 1 SG Fit

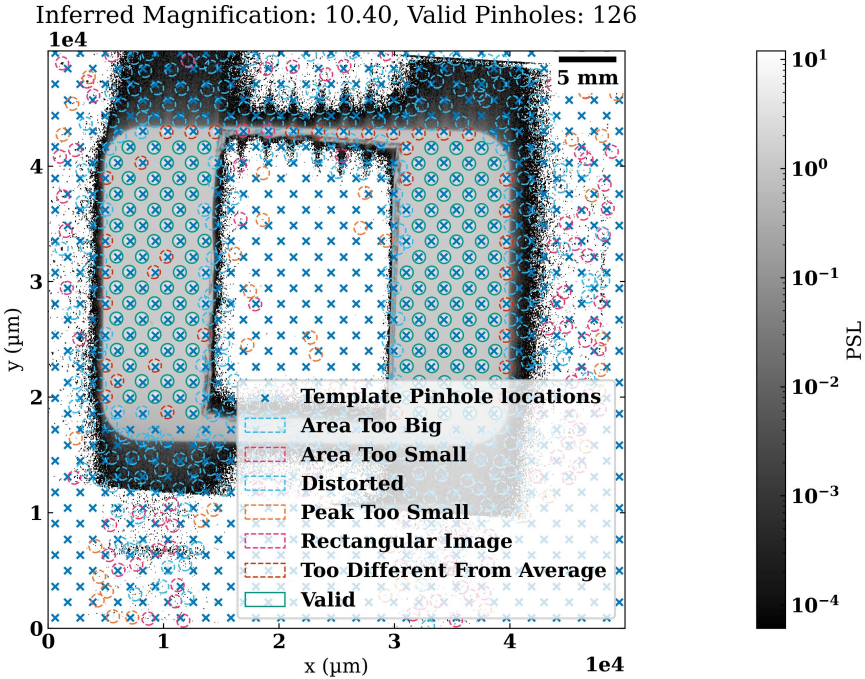


TRXI IP 1

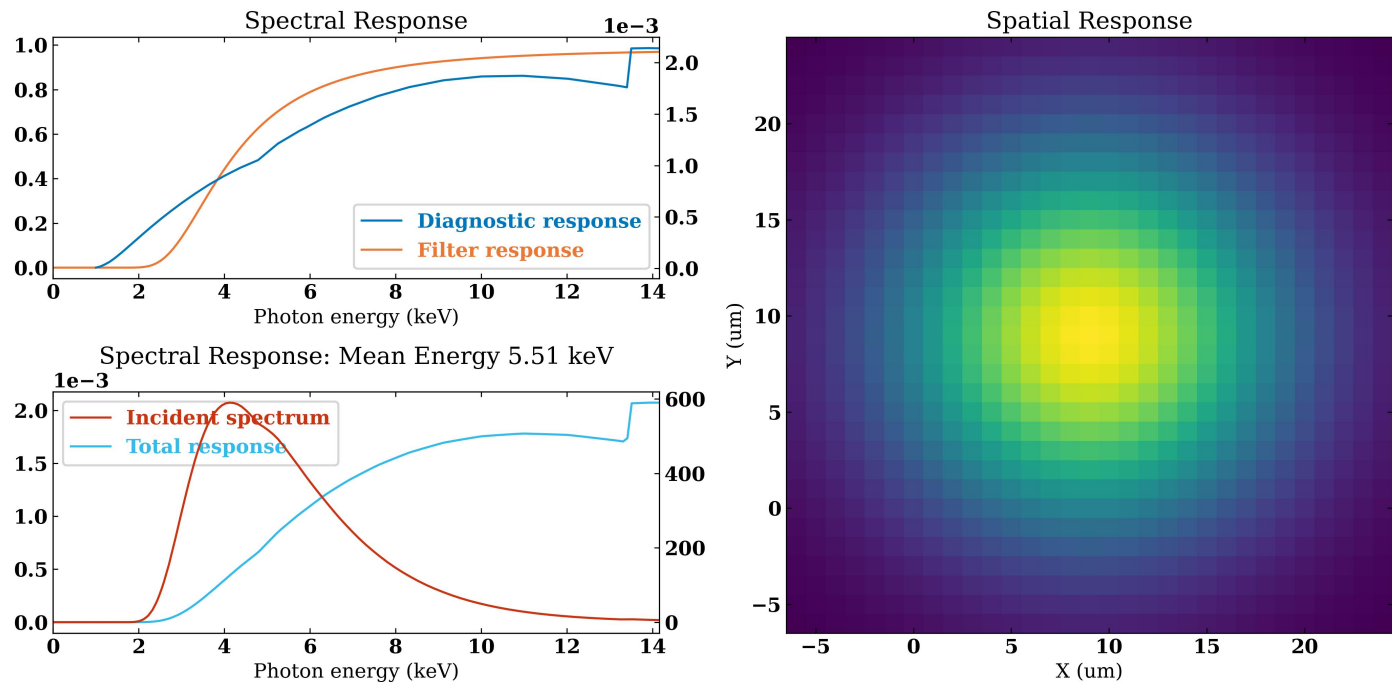
TRXI IP 1 Processing



TRXI IP 1 Pinhole Locator Report



TRXI IP 1 Response Functions



TRXI IP 1 Fresnel Diffraction

Fresnel Diffraction for $D = 5\text{ }\mu\text{m}$, $M = 10.40$, $R = 166\text{ mm}$

